

1. *Fra Bartolomeo*, Portrait of Savonarola, c. 1498-1500. Painting, Florence, Museo di San Marco.



2. *Fra Bartolomeo*, Portrait of Savonarola as St Peter martyr, c. 1508-09. Painting, Florence, Museo di San Marco.





3. *Fra Bartolomeo, Studies for St Vincent Ferrer, c. 1510-11 Drawing. Rotterdam, Museum Boijmans Van Beuningen, inv. I 563 M 128.*



4. *Fra Bartolomeo, St Vincent Ferrer, c. 1510-11. Painting (fragment). Florence, Museo di San Marco.*



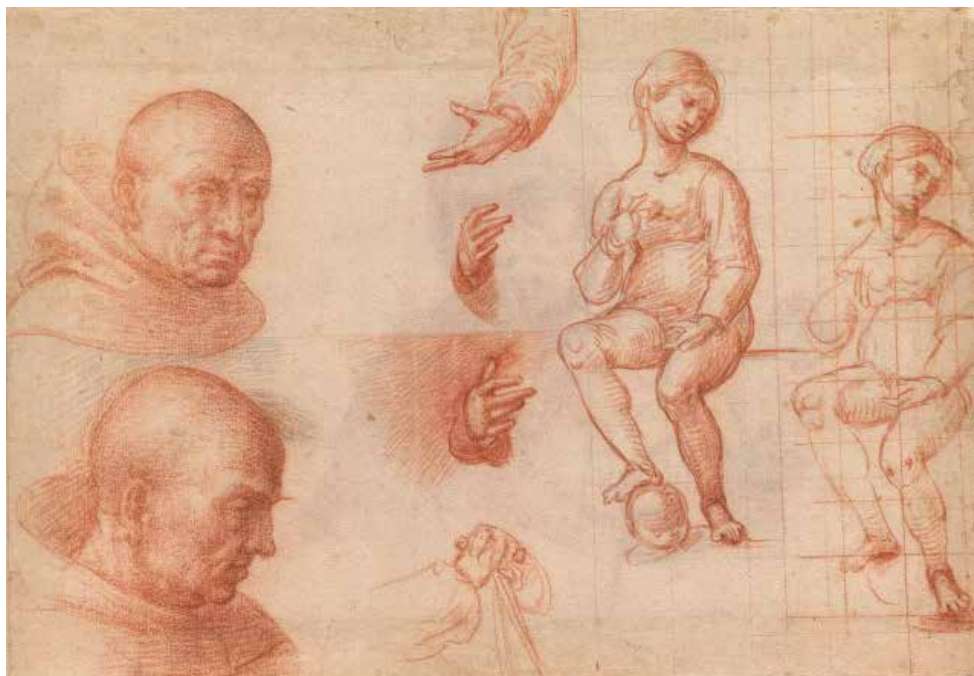
5. *Fra Bartolomeo*, Study of a dressed mannikin for a standing friar, c. 1509. Drawing. Rotterdam, *Museum Boijmans Van Beuningen*, inv. I 563 M 102v.



6. *Fra Bartolomeo*, Studies including a kneeling saint and the infant St John, c. 1510-13. Drawing. Rotterdam, *Museum Boijmans Van Beuningen*, inv. I 563 N 126.



7. *Fra Bartolomeo*, *Pala del Gran Consiglio* (detail), c. 1510-13. Painting. Florence, *Museo di San Marco*.



8. *Fra Bartolomeo*, Studies of two friars, hands and a seated mannikin, c. 1510-13.
Drawing. Rotterdam, *Museum Boijmans Van Beuningen*, inv. I 563 N 129.



9. *Fra Bartolomeo*, *Pala del Gran Consiglio* (detail), c. 1510-13.
Painting. Florence, *Museo di San Marco*, inv. 1890 n. 1574.



10. *Fra Bartolomeo*, Studies of the heads of two friars, c. 1511-12. Drawing. Private collection (formerly with art dealer Jean-Luc Baroni, London).



11. *Fra Bartolomeo*, St Vincent Ferrer, c. 1511-12 Fresco. Florence, Museo di San Marco.



12. *Fra Bartolomeo*, Study of a bare-headed friar, c. 1511-12. Drawing. Rotterdam, *Museum Boijmans Van Beuningen*, inv. I 563 N 157.



13. *Fra Bartolomeo*, St Thomas, c. 1511-12. Fresco. Florence, *Museo di San Marco*.



14. *Fra Bartolomeo*, *Madonna della Misericordia* (detail with St Dominic), 1515. Painting. Lucca, *Museo Nazionale di Villa Guinigi*.



15. *Fra Bartolomeo*, Study of the bust of a hooded friar, c. 1511-12. Drawing. Rotterdam, *Museum Boijmans Van Beuningen*, inv. I 563 129v.



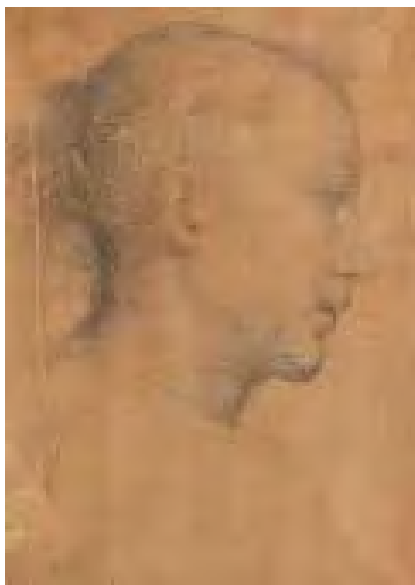
16. *Fra Bartolomeo*, St Dominic, c. 1511-12. Fresco. Florence, *Museo di San Marco*.



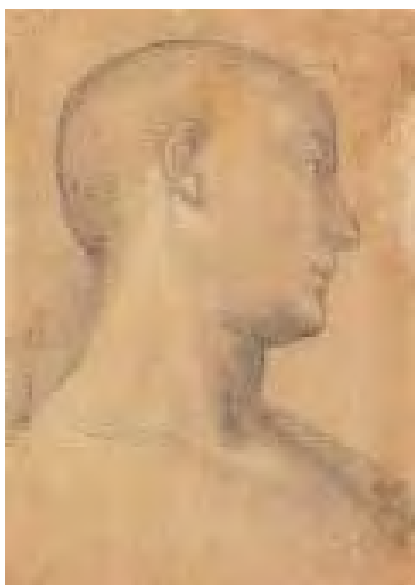
17. *Fra Bartolomeo*, Study of the head of a friar, c. 1511-12. Drawing.
Rotterdam, *Museum Boijmans Van Beuningen*, inv. I 563 N 146.



18. *Fra Bartolomeo*, St Dominic, c. 1511-12. Fresco (detached).
Florence, *Museo di San Marco*.



19. *Fra Bartolomeo*, Study of a man's head in profile, c. 1506-07. Drawing.
Rotterdam, *Museum Boijmans Van Beuningen*, inv. I 563 N 140.



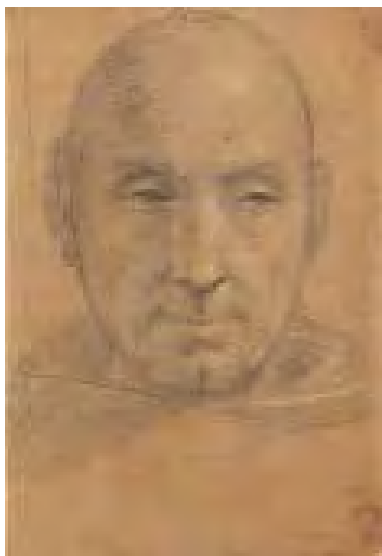
20. *Fra Bartolomeo*, Study of a man's head in profile, c. 1506-07. Drawing.
Rotterdam, *Museum Boijmans Van Beuningen*, inv. I 563 N 141.



21. *Fra Bartolomeo*, *Madonna del Santuario* (detail with *St Stephen*, a presumed portrait of *fra Niccolò della Magna*), 1509. Painting. Lucca, *San Martino Cathedral, Cappella del Santuario*.



22. *Fra Bartolomeo*, *Christ and the pilgrims on the road to Emmaus*, c. 1511-12. Fresco (detached). Florence, *Museo di San Marco*.



23. *Fra Bartolomeo*, Study of a bare-headed friar in frontal view, c. 1509. Drawing. Rotterdam, *Museum Boijmans Van Beuningen*, inv. I 563 N 163.



24. *Fra Bartolomeo*, Padre Eterno (detail of God the Father), 1509. Painting. Lucca, *Museo Nazionale di Villa Guinigi*.



25. *Fra Bartolomeo*, *Carondelet Madonna*
(detail with the donor's portrait),
1511-12. *Painting*.
Besançon, St John's Cathedral.



26. *Fra Bartolomeo*, *Madonna della Misericordia*
(detail with the donor's portrait), 1515. *Painting*. *Lucca, Museo Nazionale di Villa Guinigi.*



27. *Fra Bartolomeo*, *Portrait of a man in profile*, c. 1515. *Drawing*.
Moscow, Pushkin Museum (claimed by the State of the Netherlands).



28. *Fra Bartolomeo*,
Study of the veiled head
of an old woman, c. 1515.
*Drawing. Rotterdam, Museum
Boijmans Van Beuningen,*
inv. I 563 N 183.



29. *Fra Bartolomeo*,
Study of the veiled head
of an old woman, c. 1515.
*Drawing. Rotterdam, Museum
Boijmans Van Beuningen,*
inv. I 563 N 180.



30. *Fra Bartolomeo*, Study of the head of a young woman, c. 1515. Drawing.
Rotterdam, *Museum Boijmans Van Beuningen*, inv. I 563 N 186.



31. *Fra Bartolomeo*, *Madonna della Misericordia* (detail with a presumed self-portrait), 1515. *Painting*. Lucca, Museo Nazionale di Villa Guinigi.



32. *Fra Bartolomeo*, *Presumed Self-Portrait*, c. 1510-12. *Drawing*. Munich, Staatliche Graphische Sammlung.



33. *Fra Bartolomeo, Pala del Gran Consiglio (detail with a presumed self-portrait), c. 1510-13. Painting. Florence, Museo di San Marco.*



34. *Giorgio Vasari, Portrait of Fra Bartolomeo in a cartouche, c. 1568. Woodcut heading the biography of the artist in Vasari's Vite, second edition, Florence 1568, part 3, p. 34.*



35. *Fra Bartolomeo*,
Portrait of Michelangelo
Buonarroti, c. 1516.
Drawing. Rotterdam,
Museum Boijmans Van
Beuningen, inv. I 563 N 185.



36. *Daniele da Volterra*,
Portrait bust
of Michelangelo Buonarroti,
c. 1564-65. *Bronze sculpture.*
Florence, Galleria
dell'Accademia.



37. *Fra Bartolomeo*, Portrait of Michelangelo Buonarroti, c. 1516. Drawing.
Rotterdam, Museum Boijmans Van Beuningen, inv. I 563 N 181.